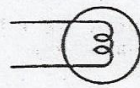
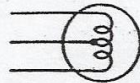




SIMBOLOS ELECTRICOS



LAMPARA CON
 FILAMENTO
 SENCILLO



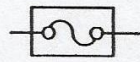
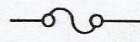
LAMPARA CON
 DOBLE FILAMENTO



FUSIBLE



ESLABON FUSIBLE



(SIMBOLOS
 ANTERIORES)



DIODO



DIODO EMISOR DE
 LUZ (LED)



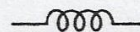
MOTOR



TRANSISTOR



RESISTOR



BOBINA



ACUMULADOR
 (cada conjunto de
 líneas = una celda)



RESISTENCIA
 VARIABLE



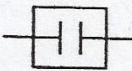
TERMISTOR



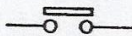
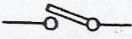
INTERRUPTOR DE
 LAMINILLAS



CORTA CIRCUITOS



CONDENSADOR



INTERRUPTOR
 (normalmente abierto)



INTERRUPTOR
 (normalmente cerrado)



TIERRA



NO EXISTE
 CONEXION ENTRE
 LOS CABLES



SI EXISTE CONEXION
 ENTRE LOS CABLES



CIRCUITO DE
 DERIVACION